



SIGN ASSOCIATES, INC.

www.signassociatesva.com

Full Service National Sign Project Imaging & Lighting Company

Corporate Images For Tomorrow And Beyond

Full Service National Project Imaging Company

With Sign Associates, Inc, whatever your needs may be, whether Manufacturing , Installation, Sign Service, Design Engineering, Project Management or just Preventive Maintenance you will find our goal is to exceed your expectations backed by 32 years in the industry. From Concept to Completion, We Are With You All The Way! We are a One-stop source; One call for all your Exterior & Interior Lighting & Signage needs!

Let us keep you UP and RUNNING.

Signage
Your Brand is Our Business.



WHAT WE DO

Corporate Rebranding

Whether changing brands or just your name, your company must change its signage. Let **Sign Associates, Inc** step in to make all the necessary changes – efficiently and affordably. To the outsider, it appears to be a simple process, but we know that a successful rebranding campaign requires careful attention to detail and an unwavering commitment to branding standards compliance. **Sign Associates, Inc's** comprehensive program management helps companies avoid costly mistakes.

Franchise Network Management

Sign Associates, Inc is building our reputation on being the go-to people for many dealer and franchise-based companies. We invest the time and resources to know what works best. **Sign Associates, Inc** has perfected the process of making sure that your company's signage is not only correct but consistent from location to location. What's more... **We do it for LESS!**

Project Management

Sign Associates, Inc's versatile approach to project management is that we can provide as much or as little as you need. Some companies contract with **Sign Associates, Inc** to manage the project from start to finish. Others need us only on a consultative basis – a network of solutions for specific and individual issues within a project, via our vast experience and limitless connections.

Manufacturing

When it comes to manufacturing, you will find all custom sign cabinets, LED signage, channel letters, and architectural signage ordered through Sign Associates, Inc are sure to be of the highest quality workmanship, using the latest technology. As a result, we are able to offer a warranty of three years parts and labor - the highest in the industry on all new signage. In addition, we offer all of our high-quality products to our customers at a wholesale price with turn-key installation nationwide!

Installation

Regardless of whether you are looking to change one sign or make a large-scale, nationwide conversion, **Sign Associates, Inc** has all of the installation capabilities necessary to make your project run smoothly.

Maintenance

Sign Associates, Inc's Maintenance Program stems from a singular, simple concept: once the sign is up, we want to ensure that maintenance and repairs don't unduly burden our customers. We ensure that your signage is fully operational and clean, thereby providing you with **your best possible image and identity**. See the next page for more detail on "**Preventive Sign Maintenance**"

All Backed by 32 years hands-on Experience & Expertise



Preventive Sign Maintenance

Your signage is more than a name or a logo. It's a reflection of who you are as a company.

❖ A bright, clean sign is an invitation for business, an attention-getter in a competitive market and a symbol of your brand's standard of quality. As a proven maintenance leader, SAI offers you an extensive network of qualified contractors throughout the United States. Your goal is to exceed our customers' expectations, backed by more than 30 years in the industry.

Our Maintenance Program is designed to:

Lower your overall maintenance expenses

Maintain a consistent high-quality image to customers

Provide you with a single source for all your lighting and maintenance needs

Let us assist you with:

Affordable Preventive Maintenance

Preventative Maintenance protects your financial investment over a long period of time, keeping minor problems from escalating into large-scale, expensive problems, and reducing emergency labor costs.

Quick Response Service 24/7

Exterior / Interior Store Lighting Repairs & Re-lamping / Parking Lots

Monthly Check

Once a month, your signage will be checked and photographed for any outage and reported for necessary service. You may also call in to our toll-free number and report any outage you may discover prior to monthly checks.

Annual Cleaning

Cleaning of inside and outside of sign faces and channel letters as necessary to maintain optimal brightness

The NightWatch

Periodic on-site inspections performed during evening hours for all exterior lighting and signage

Full Service Sign, Lighting and Electrical

Service Excellence is Our Priority!



Design & Engineering

Do you need:

- Signage for an established family of brands with existing standards?
- A logo to represent your company?
- Signage developed from simply a name or logo?
- One sign, or one thousand signs?
- A pylon with revolving top, or a wind-load bearing high rise sign?

Sign Associates, Inc is able to develop the most effective, cost-saving solution available based on your needs, whatever they may be.

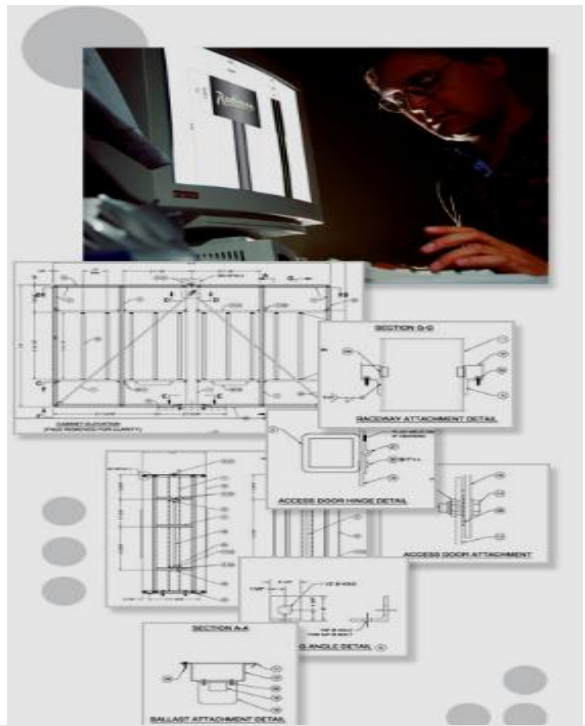
Vision...

The design team at **Sign Associates, Inc** operates on the belief that proper design requires an understanding of physical attributes, color consistency and graphic proportions. Our extensive history with a number of corporate clients has created both a knowledge and appreciation for branding standards and the importance of adherence to them.

Project Management

Sign Associates, Inc's versatile approach to project management is that we can provide as much or as little as you need. Some companies contract with **Sign Associates, Inc** to manage the project from start to finish. Others need us only on a consultative basis – a network of solutions for specific and individual issues within a project, via our vast experience and limitless connections. From one-off location audits to full-scale, multi-site management, **Sign Associates, Inc** has the personnel, tools and experience to provide you with peace of mind. Our highly trained staff of Project Managers and Field Specialists serve as a single point of contact responsible for:

- Critical Date Management
- Site Surveys / Field Impact Studies
- Permits / Property Owner Approvals
- Subcontractor Negotiations
- Installation Trade Coordination
- Adherence to Deadlines / Budgets
- Completion Documentation



From Concept to Completion, we are with you all the way!

SAI

Architectural Signage Conversions



National Rebranding

SAI

National Corporate Identity Specialists



National Rebranding

S A I

National Corporate Identity Specialists

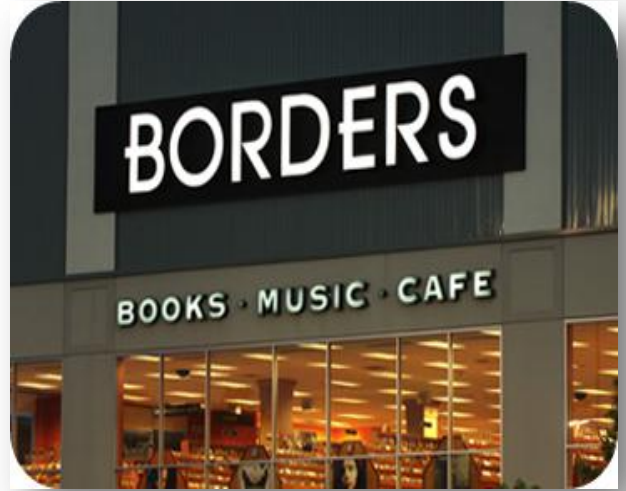


National Rebranding



S A I

National Corporate Identity Specialists



S A I

Nationwide Corporate Identity Specialists

 **State Farm**



Nationwide Rebranding

SAI

National Corporate Identity Specialists



**COLONIAL SHOOTING ACADEMY
VIRGINIA BEACH, VA
2014**

National Rebranding

SAI

Lighting Your Way



LED Energy Saving



Safety in Lighting



Equipment to do the Job



Our Maintenance Programs are designed for you!

Lower your overall maintenance expenses
Maintain a consistent high-quality image to customers. Provide you with a single source for all your lighting and maintenance needs



SIGN ASSOCIATES, INC.

Full Service National Sign Project Imaging & Lighting Company

Corporate Images For Tomorrow And Beyond



Service Excellence is Our Priority!

Signage
Your Brand is Our Business.



780 Lynnhaven Pkwy, Ste 400 Virginia Beach, VA 23452
P.O. Box 66352 Virginia Beach, VA 23466
Direct (757) 842-2796 Toll Free (877) 491-7845 Fax Toll Free (866) 230-7585
www.signassociatesva.com